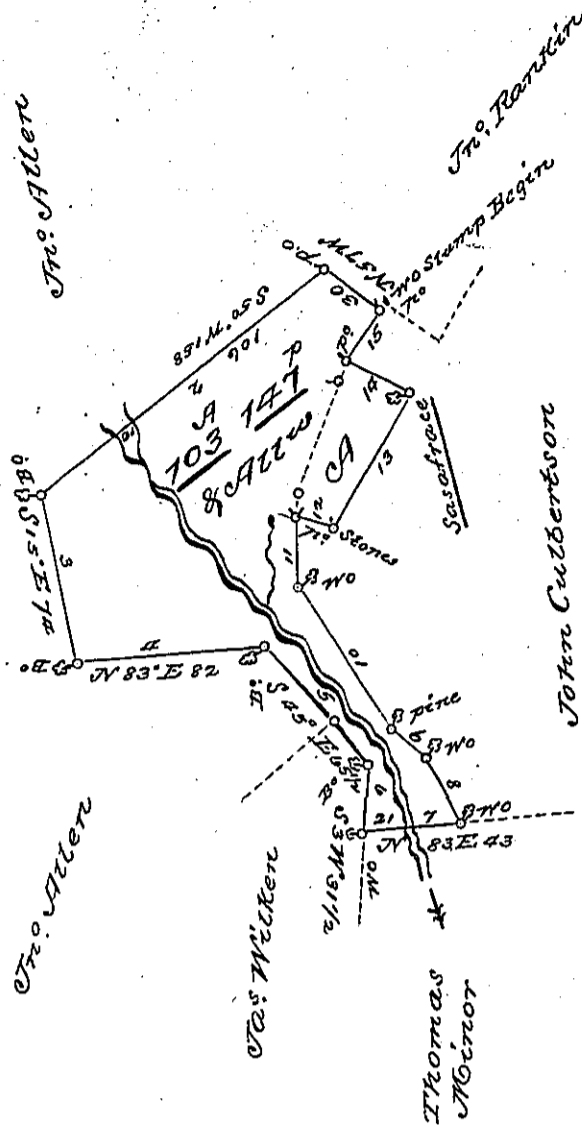


Courses & distances
Begin at No Stump

1	N 57. W	30	70
2	S 50. W	158	B?
3	S 15. E	70	B?
4	N 83. E	82	B?
5	S 45. E	65 1/2	B?
6	S 3. W	31 1/2	W?
7	N 83. E	43	W?
8	N 32. W	32	W?
9	N 52. W	19	W?
10	N 37. W	72	W?
11	N 2. W	30	W?
12	S 78. E	16 1/2	Stones
13	N 27. E	65	Sasafraze
14	N 57. W	30	W?
15	N 33. E	27	No Stump Beginning



A Tract of one hundred and three acres 147 perches of Land,
and the usual acres of Strip Cont for roads &c Situate in Waynes Township
Chefflin County, including a survey made for William Junkin the 19th day of
August 1767, on Order No 790 dated the 6th day of Aug: 1766; Also cleared Land exclu-
ded from a Survey made for Jn: Culbertson the 13th day of Nov: 1802 on Order
rant dated the 31st day of Dec: 1794 &c. reserved the 9th day of August 1820;
as well in pursuance of a Decision or Judgment of the Board of Pro-
perty dated the 5th day of August 1806; as at the request and by the direc-
tion of John Murray & Robert Rankin the persons Interested, both present &c

To Jacob Spangler Esqr.
Surveyor Gen: of Pennsylvania

Robert Robinson D^y

Note the parts of dotted line Marked to show the Land excluded from Sur-
vey of Jn: Culbertson

WCB

IN TESTIMONY that the above is a copy of the original remaining on file in
the Department of Internal Affairs of Pennsylvania, made
conformably to an Act of Assembly approved the 16th day of
February, 1833, I have hereunto set my Hand and caused
the Seal of said Department to be affixed at Harrisburg,
this first day of March 1898

James W. Pitts
Secretary of Internal Affairs.

